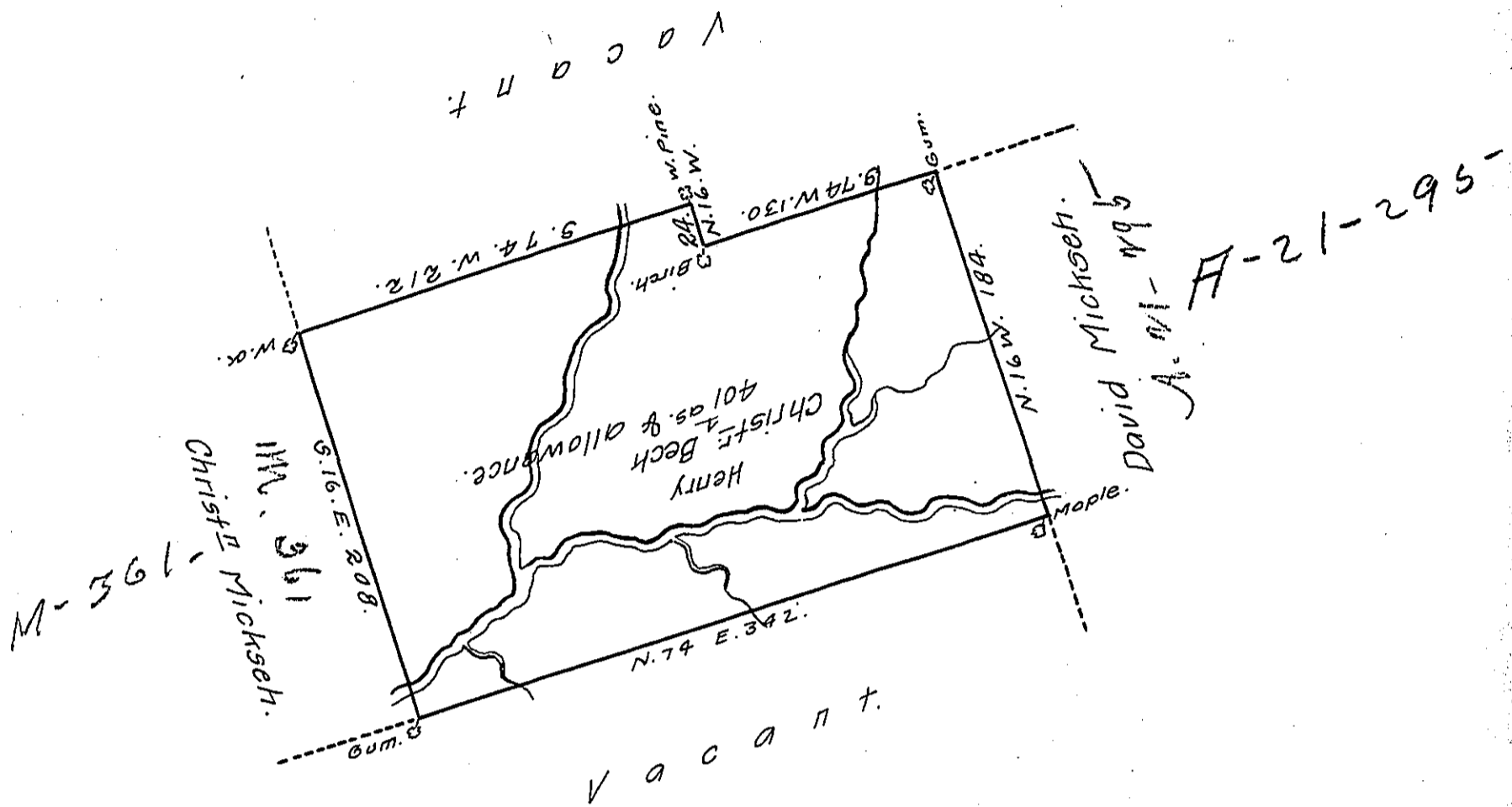


Hazel & Foster -
Luzerne



Draft of a tract of land called — situate on a branch of Nescopeck— called Black creek. Joining land surveyed for Christian & David Mickseh in Northumberland County, Catawissey Township Containing four hundred & one acres & allow^s. of six & Cent. for roads &c. Surveyed for Christiⁿ. Henry Beck the 23^d Day of May, 1792 in pursuance of a warrant dated the 3^d day of April, 1792.

To Daniel Brodhead, Esq^r, } by Wm. Gray, D.S.
 Surv^r Gen^l. }

N.B. the Warrant says supposed to be in Northamth. County.

W.G.

IN TESTIMONY that the above is a copy of the original remaining on file in the Department of Internal Affairs of Pennsylvania, made conformably to an Act of Assembly approved the 16th day of February, 1833, I have hereunto set my Hand and caused the Seal of said Department to be affixed at Harrisburg, this twenty ninth day of August, 1911.

Henry Honck
 Secretary of Internal Affairs.